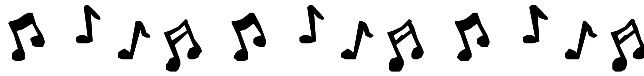




OPUS

Spring 2006



The Newsletter of the Grimsby, Cleethorpes and District Youth Orchestra

On The Move!!!

Easter 2006 will be a landmark in the history of the GCDYO as we move to only our third home in nearly 50 years. After many happy years at South Parade Junior School we were delighted to be welcomed at Franklin College when it first opened. We have enjoyed our years at Franklin but the move into the Business Centre resulted in difficulties over rooms and storage, and serious safety issues.

Our new home is Lisle Marsden Church of England Primary School in Lansdowne Avenue, off Weelsby Road. Head Teacher Greg Marsden is both a parent of one of our members and an avid supporter of the arts in general and the GCDYO in particular. Our new accommodation will consist of two halls, connected by a single corridor but far enough apart to avoid the sound spillage we suffer at the moment.

Both halls are large enough to comfortably house all of our sections and to permit a return to our custom of parents being able to come in to the last few minutes of rehearsals, if they so wish. Both halls will have good pianos; the larger hall will house our grand piano and is large enough for smaller concerts, Christmas Soirée etc. All of our instruments and library will be accommodated in a storeroom off the large hall and readily available to all sections.

Most importantly the new premises will be secure. The car park is bounded by high fencing so that the only entrance/exit is the main gate. Fences protect the school itself and the main entrance into the school building is locked at all times, with a bell to request admittance. As we are the only user on our two nights we can be assured that no intruders can get in.

With such a suitable and safe environment I am sure that all staff, members and parents will agree that it can only encourage us to enjoy and achieve even more in our music making.

Looking forward to seeing you at Lisle Marsden after the Easter Break

Chris Johnson
Principal Music Director

